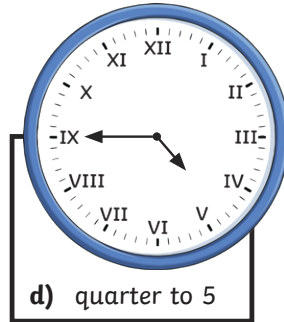
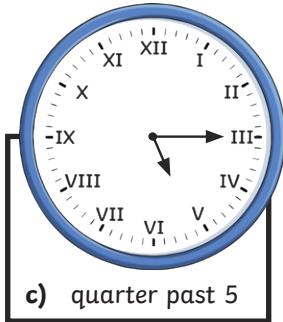
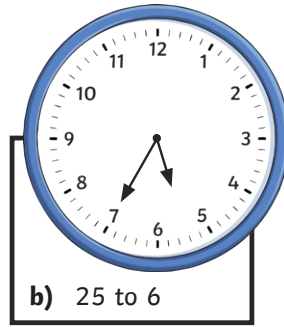
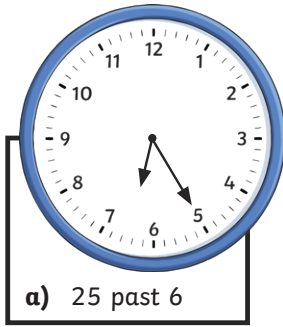




- 1) a) quarter to 1
 b) 25 minutes past 2

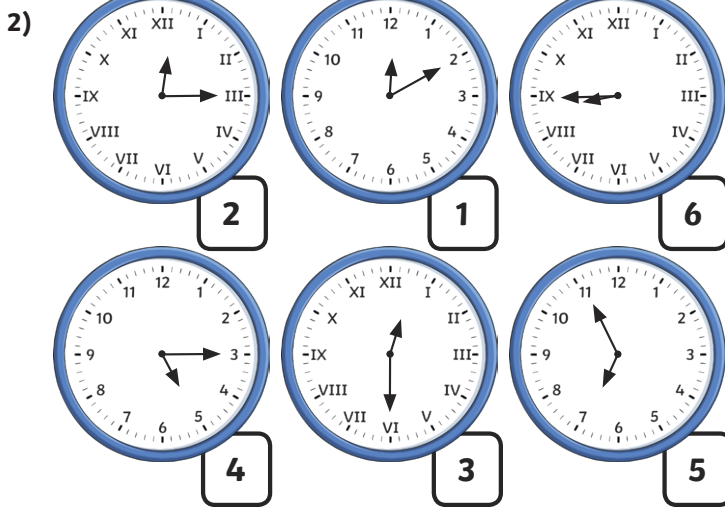
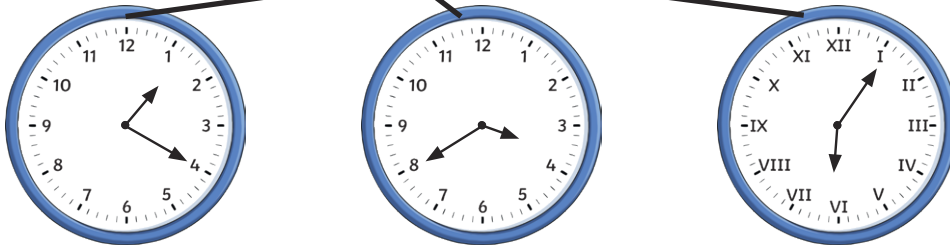
2)



- 3) a) XI
 b) VIII



- 1) 5 minutes past 6 20 minutes to 4 20 minutes past 3 20 minutes past 1



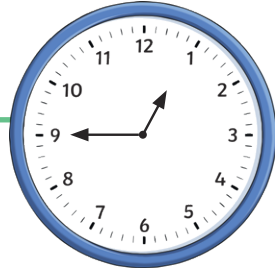
- 3) **Matthew is correct. The time shows ten minutes to five. The hour hand is not touching 5 o'clock because there are still ten minutes to pass before it is 5 o'clock.**



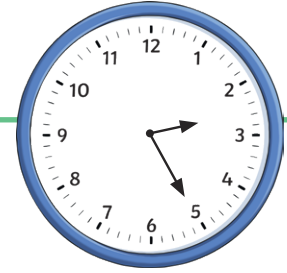
- 1) **As the hour hand sits halfway between the 3 and the 4, it is most likely that the time could be half past 3. However, other times close to this may also be considered correct.**
- 2) **Jenson is correct. VIII represents the number 8 on the clockface.**
- 3) a) **The second clockface, showing quarter past 1, would have been the latest time that year 3 could have taken their seats.**
 b) **Year 3 would have been late to the show. The show started at 20 past 1 but they sat down at 25 to 2.**
- 4) **quarter past any 7 or 8
 half past 7 or 8
 quarter to 8 or 9
 7 o'clock, 8 o'clock or 9 o'clock**



1) Write the time shown on each clock.

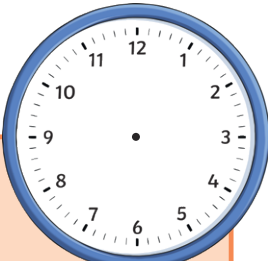


a) _____ to _____

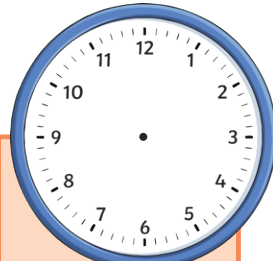


b) _____ minutes past _____

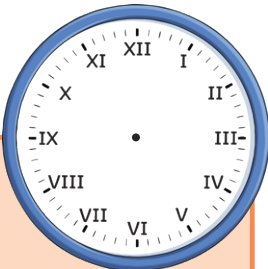
2) Draw hands to show the times given.



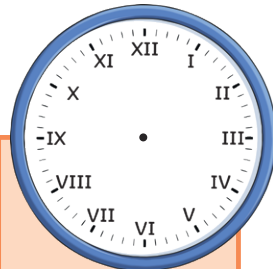
a) 25 past 6



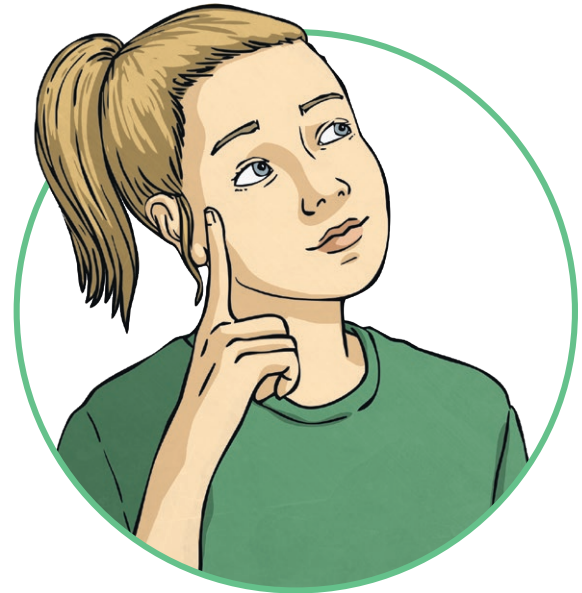
b) 25 to 6



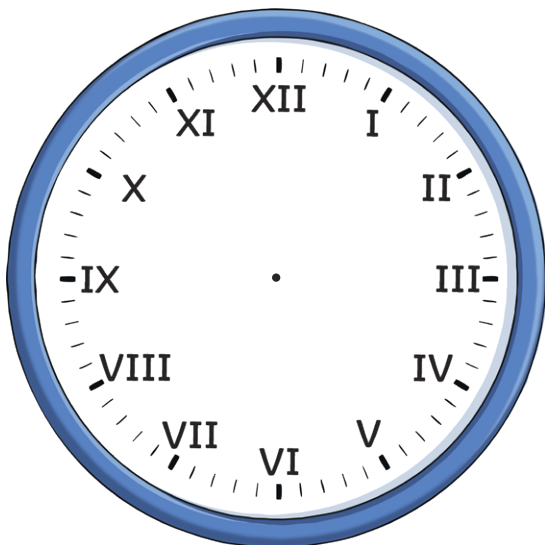
c) quarter past 5



d) quarter to 5



3) This clock uses Roman numerals.



a) If the clock shows 5 minutes to 8, what Roman numeral should the minute hand be pointing to? Please tick the correct answer.

XI

X

IV

VIII

b) What Roman numeral should the hour hand be pointing to when the clock shows 8 o'clock?



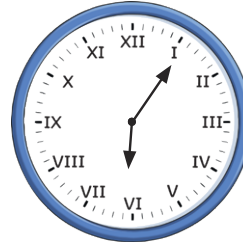
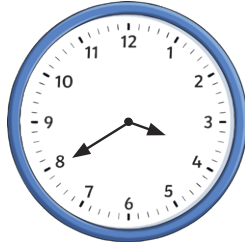
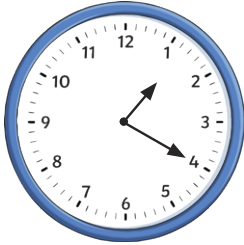
1) Match the time to the correct clock face. Which time is left over?

5 minutes past 6

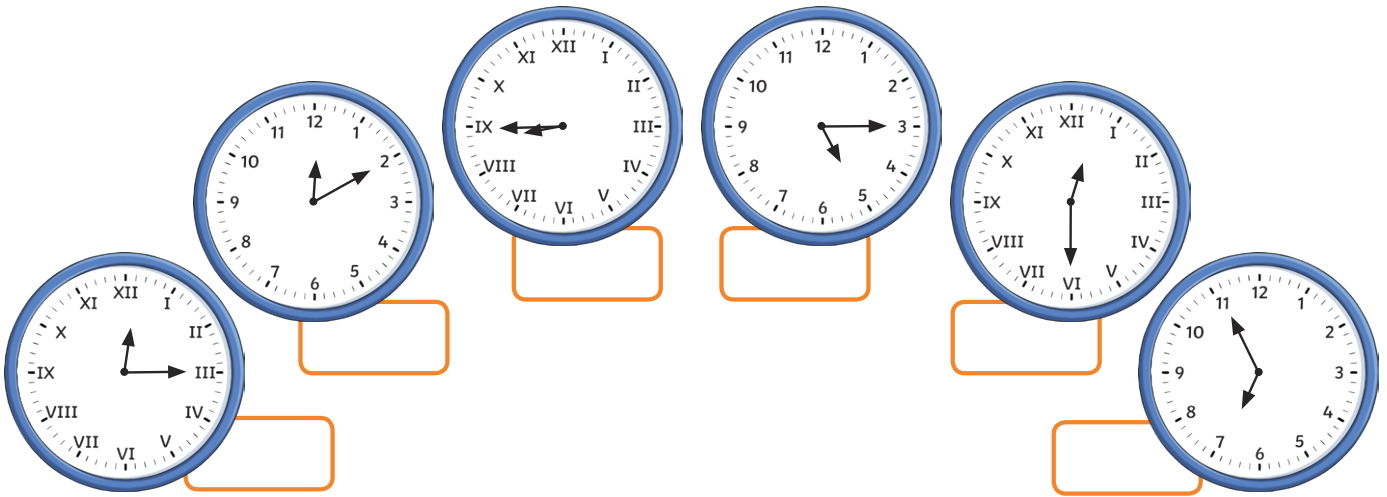
20 minutes to 4

20 minutes past 3

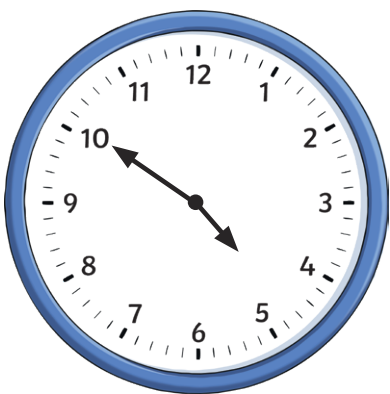
20 minutes past 1



2) Each clockface shows times in the afternoon or evening. Order the times from earliest (1) to latest (6).



3) Year 3 are discussing the time shown on the analogue clock.



The hour hand isn't on 5 so it must be ten minutes to 4.

Phoebe

The clock shows ten minutes to five.

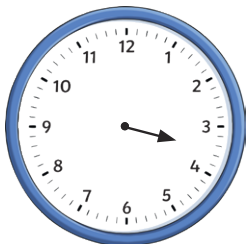


Matthew

Which of the children do you agree with? Explain your answer fully.



1) The clock face has lost its minute hand. What time could it be? Explain your answer.



2) Two friends draw 20 minutes to 7 on an analogue clock that uses Roman numerals.



The minute hand will be on VII.

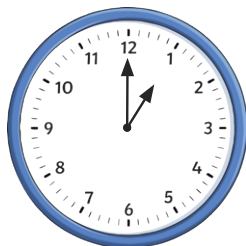
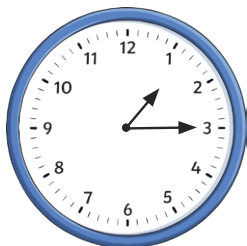
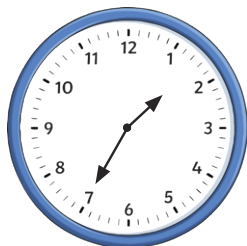
Jenson



The minute hand will be on VIII.

Which of the two friends do you agree with? Explain fully.

3) Year 3 went to the theatre. The show started at 20 past 1.



a) Which of the clock faces show the latest time that year 3 could have sat in their seats, without missing any of the show. Explain fully.

b) If year 3 sat in their seats at the time shown on the first clock, would they have been early or late? Explain your answer.

4) What times between 7 o'clock and 9 o'clock can you find where the minute hand points to a multiple of 3? Explore.

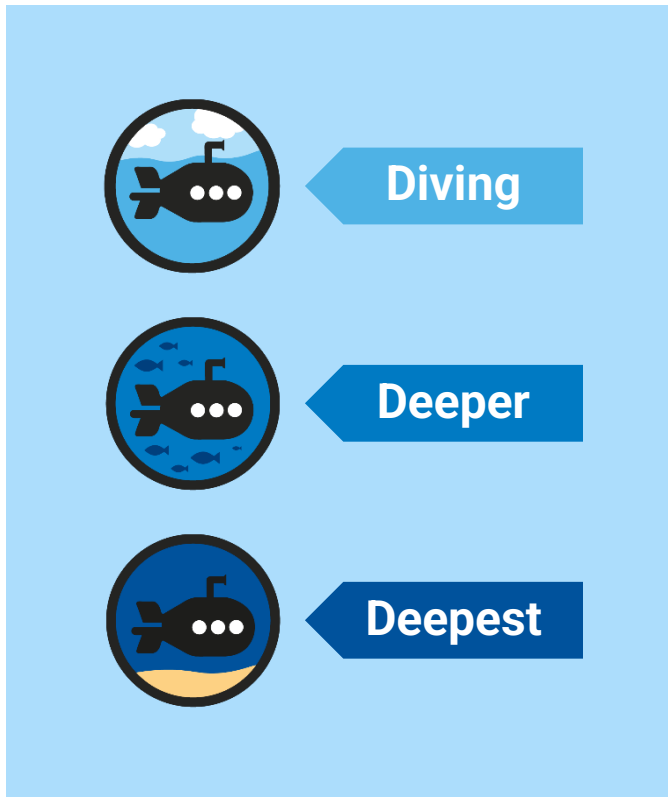
Diving into Mastery



Telling the Time to 5 Minutes

Diving into Mastery Guidance for Educators

Each activity sheet is split into three sections, diving, deeper and deepest, which are represented by the following icons:



These carefully designed activities take your children through a learning journey, initially ensuring they are fluent with the key concept being taught; then applying this to a range of reasoning and problem-solving activities.

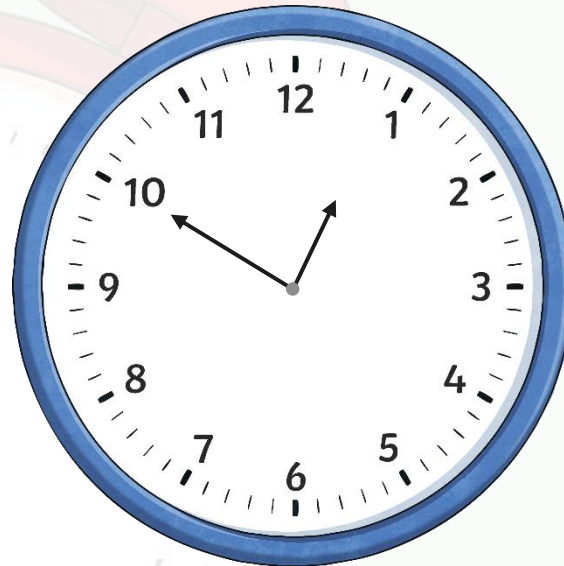
These sheets might not necessarily be used in a linear way. Some children might begin at the 'Deeper' section and in fact, others may 'dive straight in' to the 'Deepest' section if they have already mastered the skill and are applying this to show their depth of understanding.

Aim

- Tell and write the time from an analogue clock, including using Roman numerals from I to XII, and 12-hour and 24-hour clocks.



Which of the times match the time shown on the analogue clock?



10 minutes to 4

5 minutes past 10

10 minutes to 1



Which of the times match the time shown on the analogue clock?



25 minutes to 2

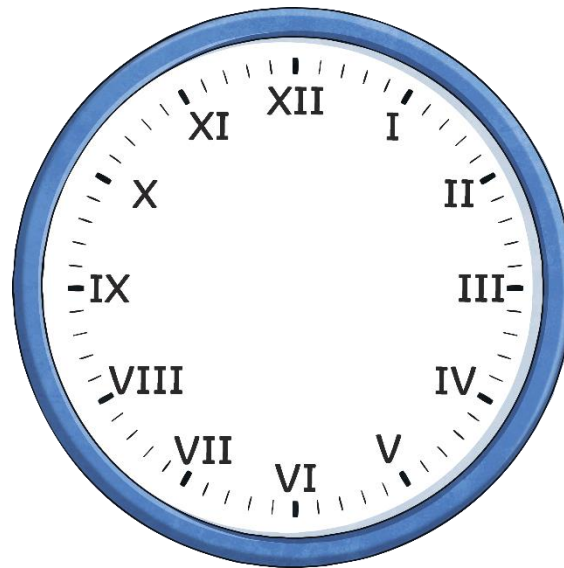
25 minutes to 3

quarter past 7



This clock should show quarter past 7

What Roman numeral should the minute hand be pointing to?



I

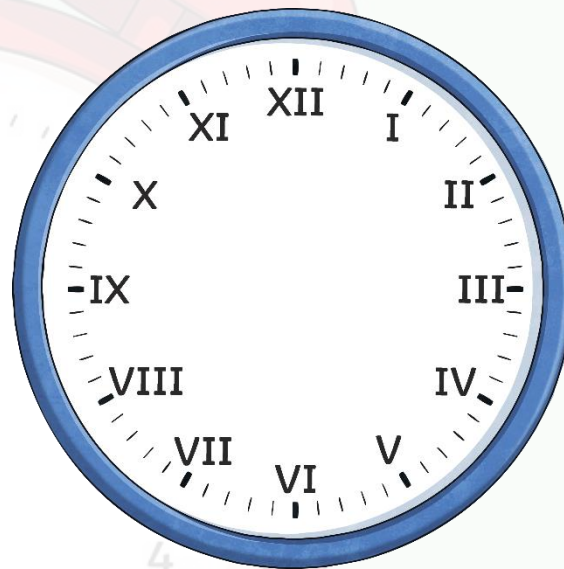
II

III



This clock should show 6 o'clock.

What Roman numeral should the hour hand be pointing to?



VII

VI

V



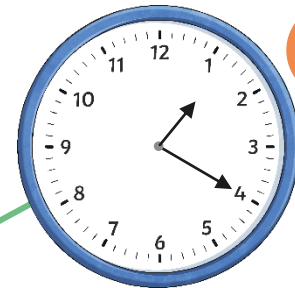
Match the times in words to the correct clock face.

5 minutes past 6

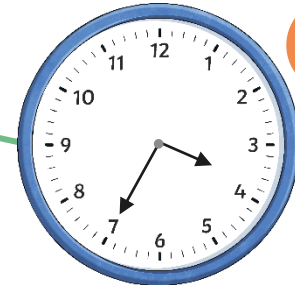
25 to 4

20 minutes past 3

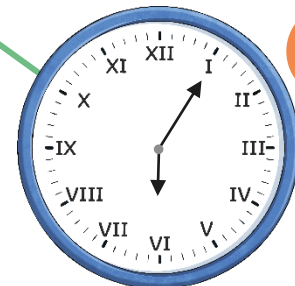
20 minutes past 1



A



B



C

Which time is not shown on a clock?



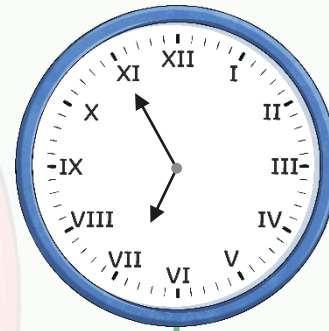
Each clockface shows a time in the morning.
Order the times from earliest to latest.



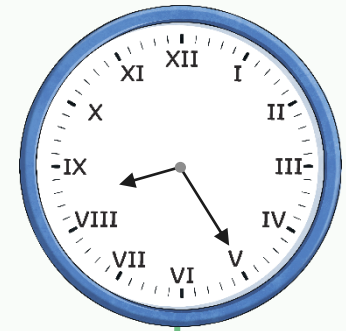
5 minutes
to 7



25 minutes
past 8



25 minutes
past 10

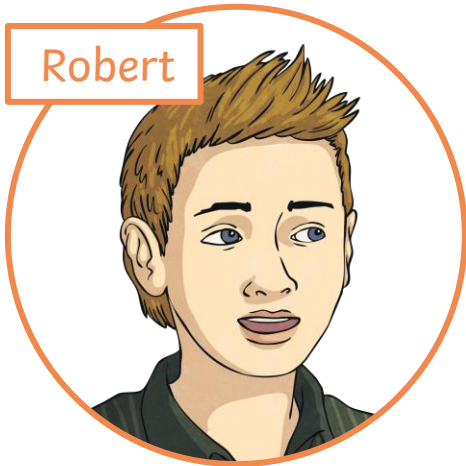


20 minutes
past 11



Year 3 are discussing time shown on the analogue clock.

Robert

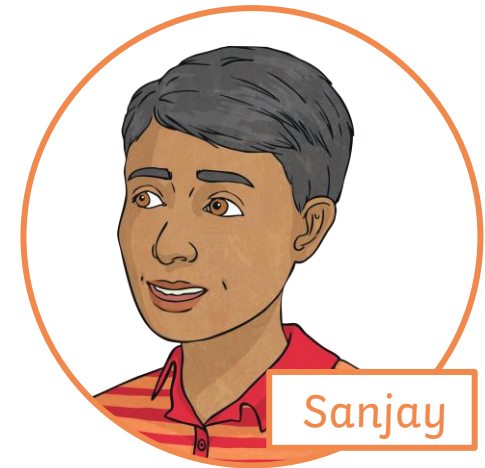


At half past nine, the hour hand will be half way between eight and nine on the clock face.

I disagree. I think it will be halfway between nine and ten.

Sanjay is correct.

At half past the hour, the hour hand sits half way between that hour and next hour.



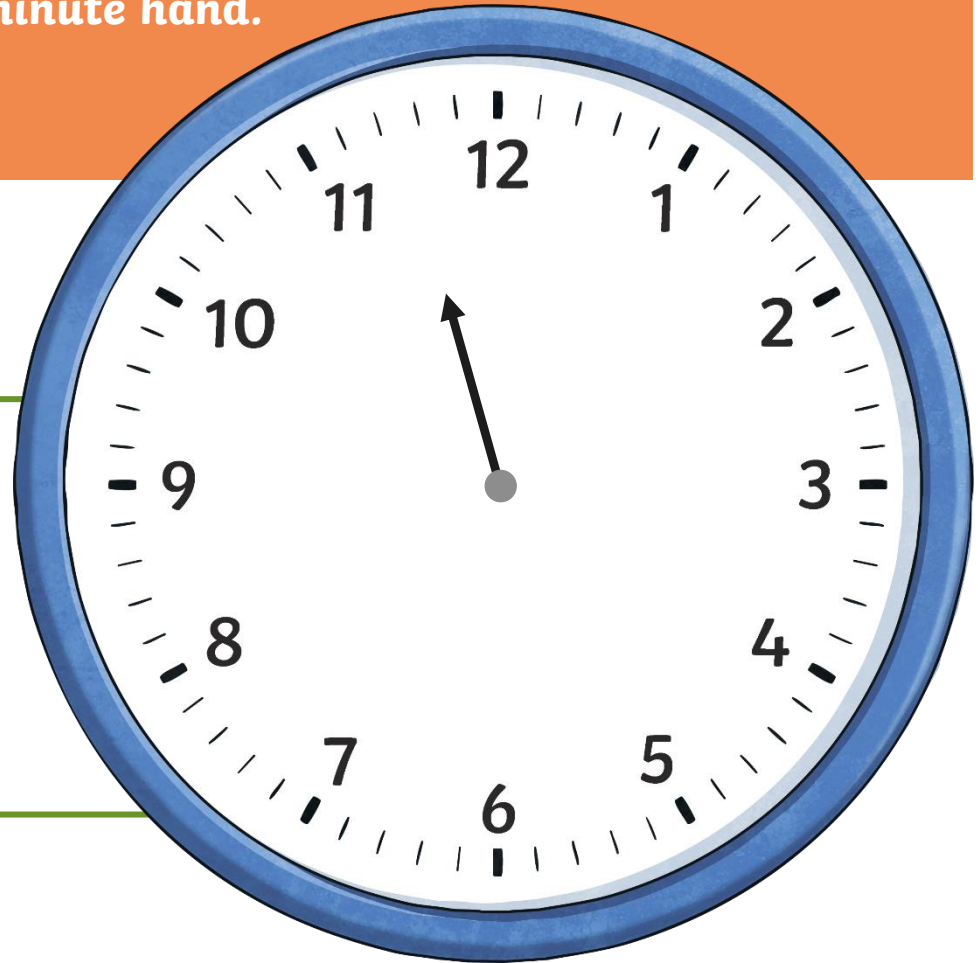
Sanjay

Which of the children do you agree with? Explain your answer fully.



The clock face has lost its minute hand.
What time could it be?
Explain your answer.

As the hour hand looks like it is directly between the 11 and 12, it could be half past 11. Although other times close to this can be right as well.





Two friends draw 25 minutes past 4 on an analogue clock that uses Roman numerals.

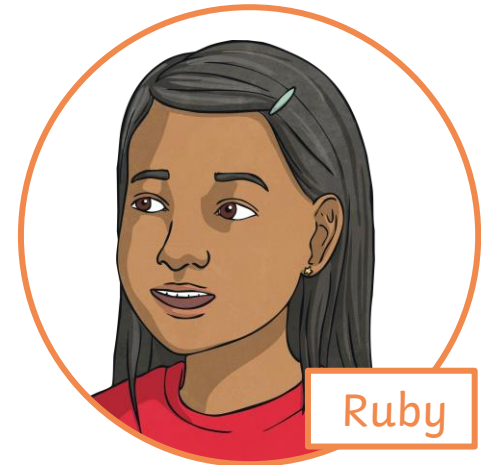
Michelle



The minute hand will be on V.

The minute hand will be on VII.

Michelle is correct because the minute hand will need to be on 5 and $V = 5$.



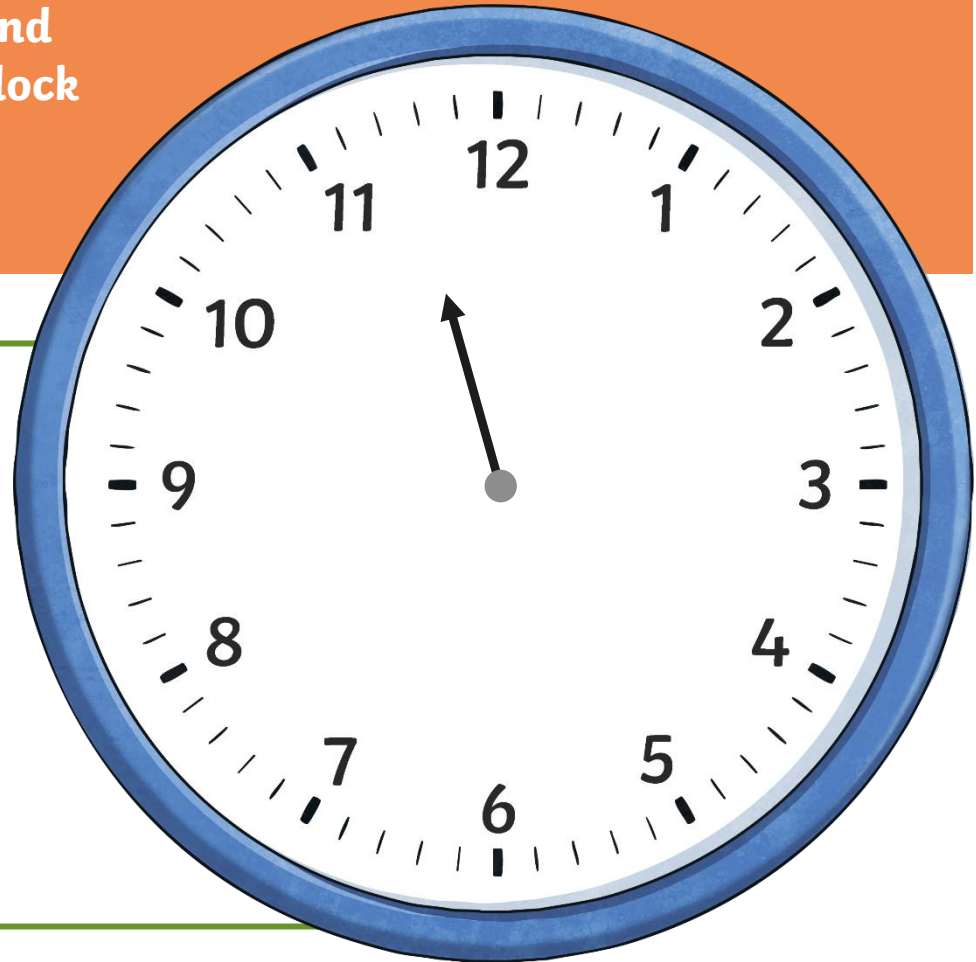
Ruby

Which of the children do you agree with? Explain your answer fully.



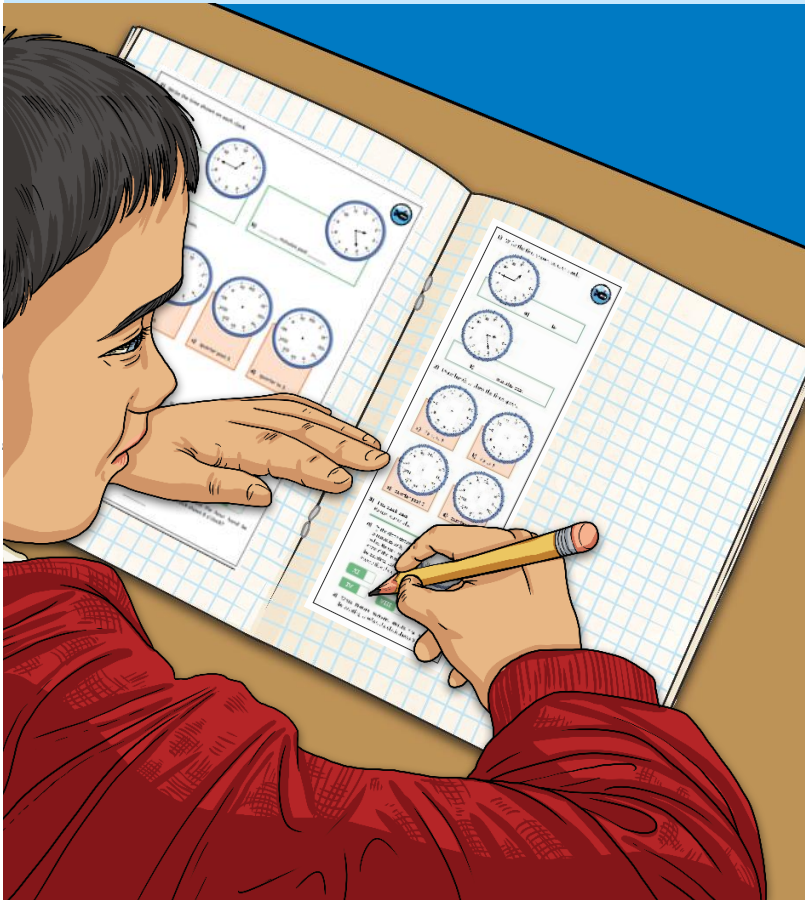
How many times can you find between 4 o'clock and 7 o'clock where the minute hand is a multiple of 2? Explore.

- **10 past** 4/5/6
- **20 past** 4/5/6
- **half past** 4/5/6
- **20 to** 5/6/7
- **10 to** 5/6/7
- **4/5/6/7 o'clock**



Telling the Time to 5 Minutes

Dive in by completing your own activity!



1) The clock shows 5 minutes past 8. Write the time in words.

2) Two friends are talking. One says, "It's 10 o'clock." The other says, "It's 10 minutes past 10." Write the time in words.

3) Year 3 is having a picnic. The picnic starts at 12:15. Write the time in words.

a) Which time is 15 minutes past 12?

b) If you start at 12:15 and stop at 12:30, how long is the picnic?

4) What time is it? Write the time in words.

1) Match the time to the clock.

5 minutes

2) Write the time shown on each clock.

a) _____ to _____

b) _____ minutes past _____

2) Draw hands to show the times given.

a) 25 past 6

b) 25 to 6

c) quarter past 5

d) quarter to 5

3) This clock uses Roman numerals.

a) If the clock shows 5 minutes to 8, what Roman numeral should the minute hand be pointing to? Please tick the correct answer.

XI X

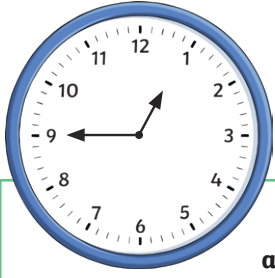
IV VIII

b) What Roman numeral should the hour hand be pointing to when the clock shows 8 o'clock?

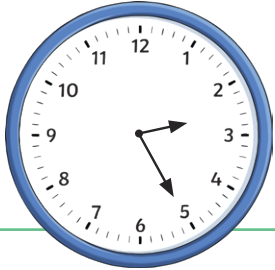
twinkl



1) Write the time shown on each clock.

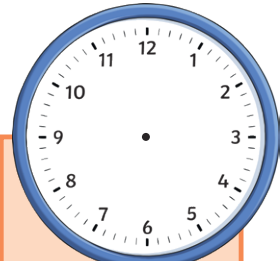


a) _____ to _____

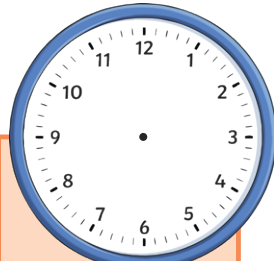


b) _____ minutes past _____

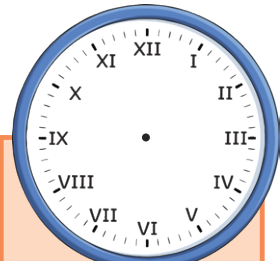
2) Draw hands to show the times given.



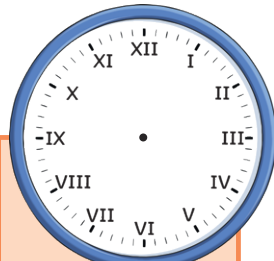
a) 25 past 6



b) 25 to 6



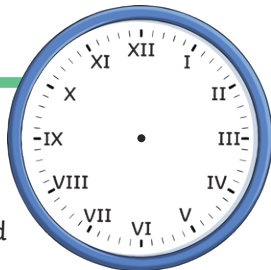
c) quarter past 5



d) quarter to 5

3) This clock uses Roman numerals.

a) If the clock shows 5 minutes to 8, what Roman numeral should the minute hand be pointing to?



XI

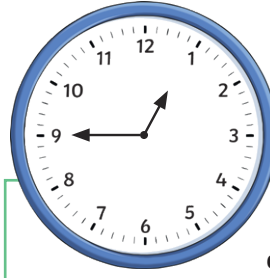
X

IV

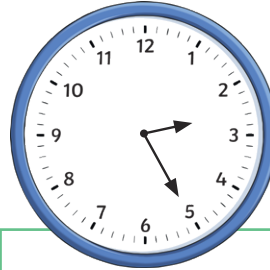
VIII

b) What Roman numeral should the hour hand be pointing to when the clock shows 8 o'clock?

1) Write the time shown on each clock.

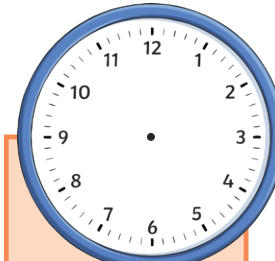


a) _____ to _____

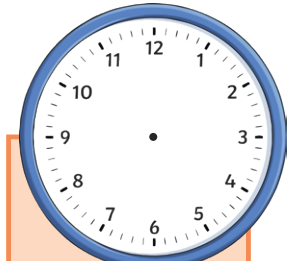


b) _____ minutes past _____

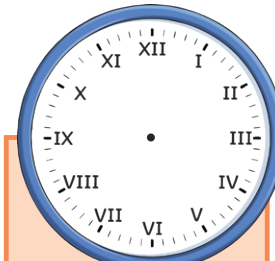
2) Draw hands to show the times given.



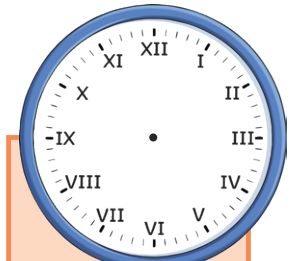
a) 25 past 6



b) 25 to 6



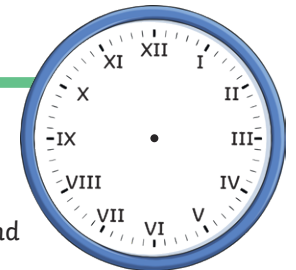
c) quarter past 5



d) quarter to 5

3) This clock uses Roman numerals.

a) If the clock shows 5 minutes to 8, what Roman numeral should the minute hand be pointing to?



XI

X

IV

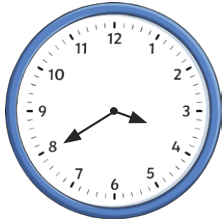
VIII

b) What Roman numeral should the hour hand be pointing to when the clock shows 8 o'clock?

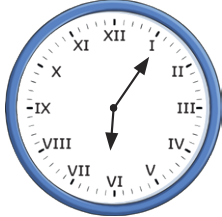
1) Match the time to the correct clock face.
Which time is left over?



5 minutes past 6



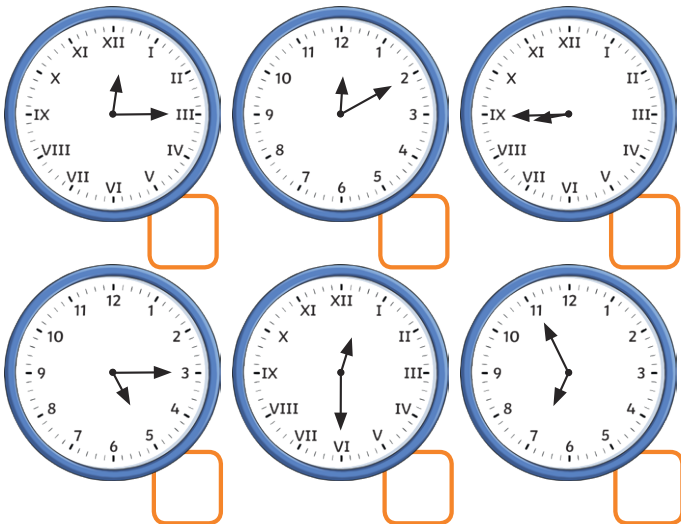
20 minutes to 4



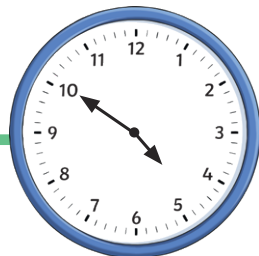
20 minutes past 3

20 minutes past 1

2) Each clockface shows times in the afternoon or evening. Order the times from earliest (1) to latest (6).



3) Year 3 are discussing the time shown on the analogue clock.



The hour hand isn't on 5 so it must be ten minutes to 4.

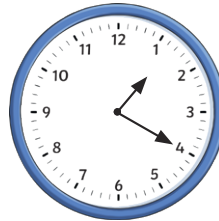
Phoebe

The clock shows ten minutes to five.

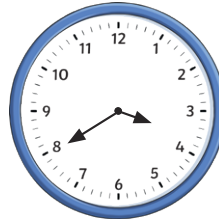
Matthew

Which of the children do you agree with? Explain your answer fully.

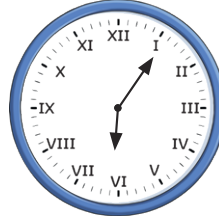
1) Match the time to the correct clock face.
Which time is left over?



5 minutes past 6



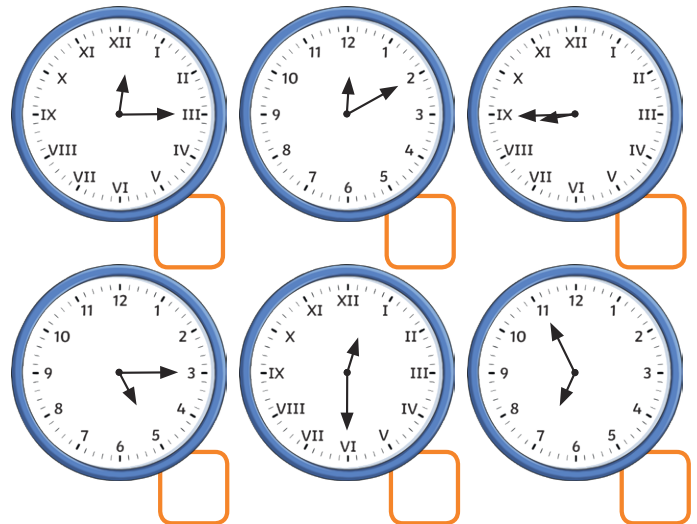
20 minutes to 4



20 minutes past 3

20 minutes past 1

2) Each clockface shows times in the afternoon or evening. Order the times from earliest (1) to latest (6).



3) Year 3 are discussing the time shown on the analogue clock.



The hour hand isn't on 5 so it must be ten minutes to 4.

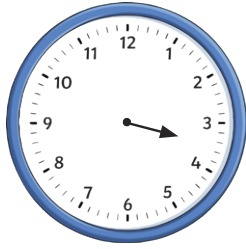
Phoebe

The clock shows ten minutes to five.

Matthew

Which of the children do you agree with? Explain your answer fully.

- 1) The clock face has lost its minute hand. What time could it be? Explain your answer.



- 2) Two friends draw 20 minutes to 7 on an analogue clock that uses Roman numerals.



Sunni

The minute hand will be on VII.

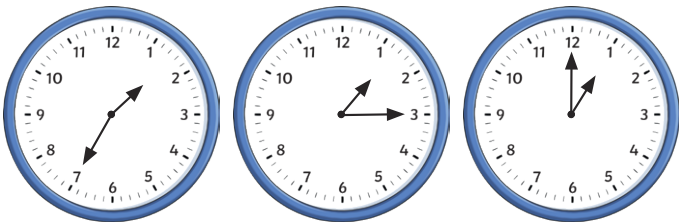
The minute hand will be on VIII.



Jenson

Which of the two friends do you agree with? Explain fully.

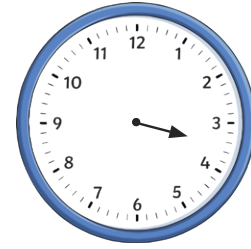
- 3) Year 3 went to the theatre. The show started at 20 past 1.



- a) Which of the clock faces show the latest time that year 3 could have sat in their seats, without missing any of the show. Explain fully.
- b) If year 3 sat in their seats at the time shown on the first clock, would they have been early or late? Explain your answer.

- 4) What times between 7 o'clock and 9 o'clock can you find where the minute hand points to a multiple of 3? Explore.

- 1) The clock face has lost its minute hand. What time could it be? Explain your answer.



- 2) Two friends draw 20 minutes to 7 on an analogue clock that uses Roman numerals.



Sunni

The minute hand will be on VII.

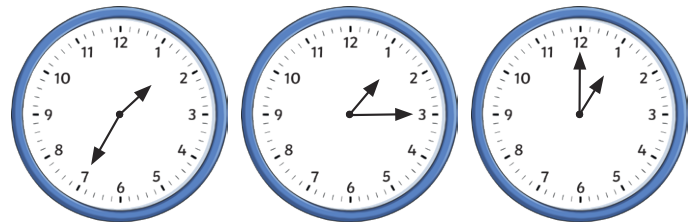
The minute hand will be on VIII.



Jenson

Which of the two friends do you agree with? Explain fully.

- 3) Year 3 went to the theatre. The show started at 20 past 1.



- a) Which of the clock faces show the latest time that year 3 could have sat in their seats, without missing any of the show. Explain fully.
- b) If year 3 sat in their seats at the time shown on the first clock, would they have been early or late? Explain your answer.

- 4) What times between 7 o'clock and 9 o'clock can you find where the minute hand points to a multiple of 3? Explore.